

DENTAL

CATALOGUE



PRODUCING QUALITY GOODS FOR 15 YEARS

We are Producers of quality surgical, dental, beauty and general stainless steel products in singleuse and multiuse types. We guarantee on our products and facilitate our customers with easy return policies.



For more information visit www.mjwintl.net



Manufacturer and Exporter of Surgical, Dental and Beauty Instruments

Head Office

BI24S 88/8 Bara Pathar
Christian Town, Sialkot
Pakistan (51310)
0092 524 264829

Branch Office

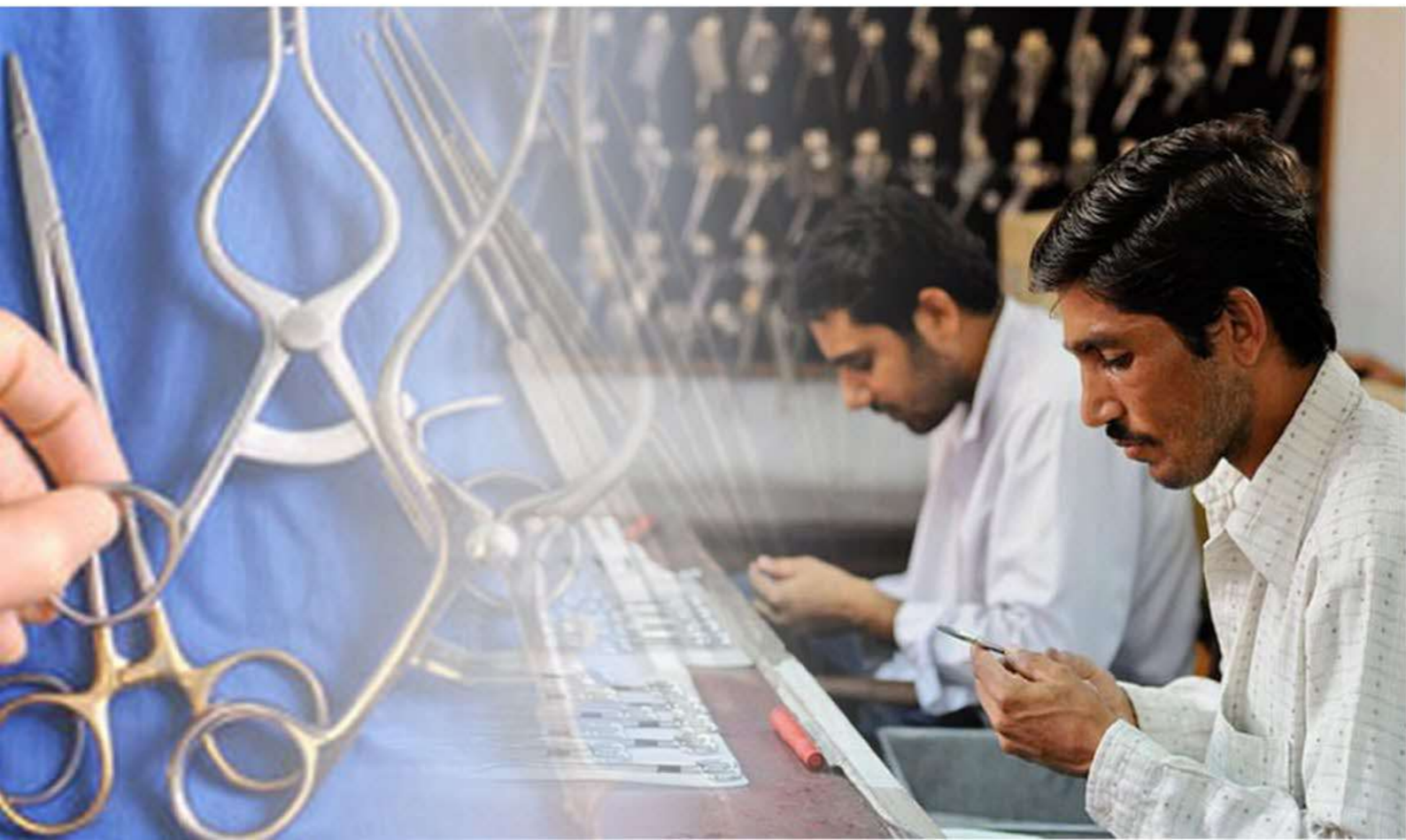
Flat 1, Kinsale Grange
57 Langley Park Road,
Sutton-Surrey SM2-5GZ UK.
Mob: 00447701084895

Contact Details

Email: info@mjwintl.net
mjwinternational2005@gmail.com
Mobile: 0092 321 712 1510
Mobile: 0092 333 371 3443



FACTORY OVERVIEW



INTRODUCTION

for fifteen years MJW Surgical has been supplying the Healthcare Industry with finest quality surgical instruments & innovative products for surgery. With our extensive knowledge and experience in the medical field, our products are specifically designed to offer both exceptional quality and value for money to Healthcare Professionals and Organisations. During the last few years there have been numerous developments within our company, with the introduction of many new innovative products and services to our portfolio, which has allowed MJW Surgical to make a significant impact on the healthcare market. Our head office is based in Sialkot, Pakistan housing all Customer Service and Administrative functions. Additionally, we have an office in the UK covering Europe and the USA. Our range of specialised surgical instrumentation is uniquely manufactured in Sialkot to the highest standards of craftsmanship. Our goal is to continue to develop new, innovative medical products that will enhance the quality of surgical procedures.

OUR SERVICE COMMITMENT

QUALITY of All surgical instruments and products manufactured and distributed by MJW Surgical conform to the highest European and International Standards with all products bearing the relevant CE mark for their classification.

GUARANTEE OF SATISFACTION

All products undergo rigorous quality control assessment and are fully guaranteed. Any product proving unsatisfactory in normal use will be replaced or repaired free of charge following inspection.

VALUE FOR MONEY

We believe our surgical instruments and products to be competitively priced representing excellent value for money. We are happy to offer discounts for contracts.

QUOTATION SERVICE

We offer a no obligation quotation service whereby we will specify, code and price your requirements using our extensive product library which enables us to cross-reference most products.

PRODUCT INFORMATION

Sectional catalogues are available for most surgical specialities.

INNOVATION

Our objective is to work in close conjunction with all medical and nursing personnel to develop new and innovative products and services.

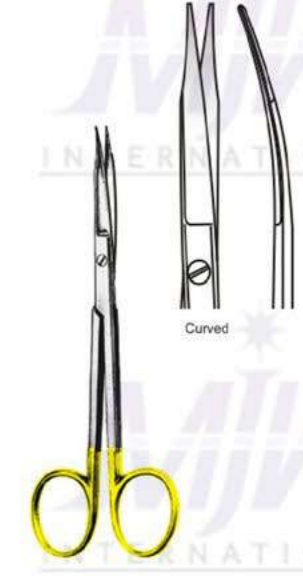
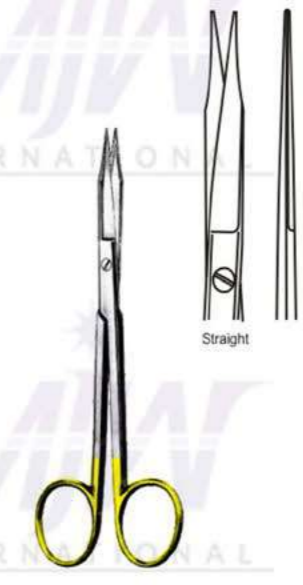
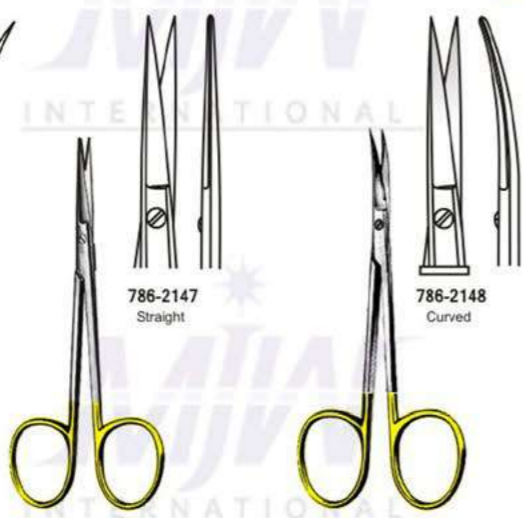
Scissors with Tungsten Carbide Inserts
 Scheren mit Hartmetalleinsätzen
 Tijeras con Filos de Carburo de Tungsteno



Scissors with Tungsten Carbide Inserts
 Scheren mit Hartmetalleinsätzen
 Tijeras con Filos de Carburo de Tungsteno

T.C
 INSERTS

T.C
 INSERTS



Gum Scissors TC
 13 cm / 5"
 Angular

Gum Scissors TC
 11.5 cm / 4½"

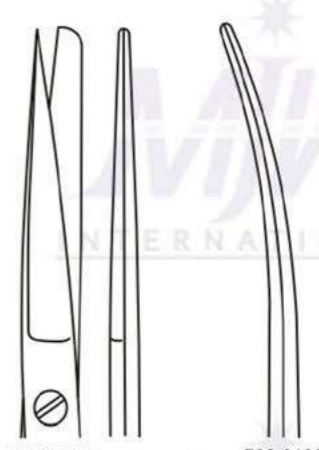
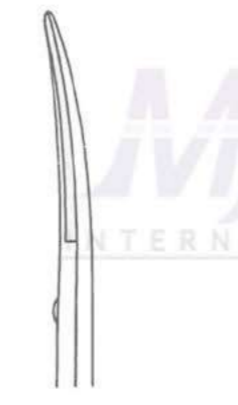
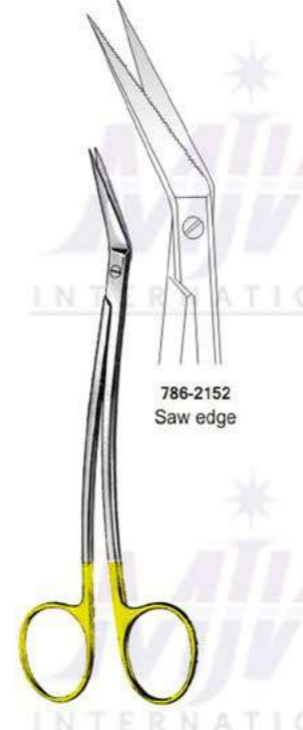
Gum Scissors TC
 11.5 cm / 4½"

Gum Scissors TC
 11.5 cm / 4½"

Universa TC
 786-2153
 12 cm / 5"

Goldman-Fox TC
 786-2154
 13 cm / 5"

Goldman-Fox TC
 786-2155
 13 cm / 5"
 Goldman-Fox TC
 (special)
 786-2156
 13 cm / 5"



Dean TC
 17 cm / 6¾"

Locklin TC
 16 cm / 6¼"

Locklin TC
 16 cm / 6¼"

Metzenbaum TC
 786-2157 14cm Str
 786-2158 18cm Str
 786-2159 20cm Str
 786-2160 23cm Str

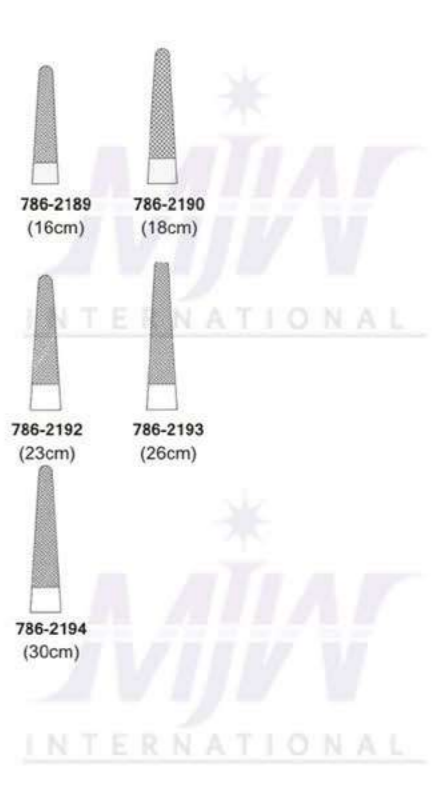
786-2161 14cm Cur
 786-2162 18cm Cur
 786-2163 20cm Cur
 786-2164 23cm Cur

Standard TC

786-2165 14.5 cm / 5¾"
 Straight
 16 cm / 6¼"
 786-2166 18 cm / 7"
 Curved

Also available in German Forging

Also available in German Forging



Also available in German Forging

T.C
INSERTS

T.C
INSERTS



Crile-Wood TC
786-2195
15 cm / 6"
18 cm / 7"
20 cm / 8"



786-2196
15 cm / 6"



Gillies TC
16 cm / 6 1/4"
786-2197

Mini Gillies TC
10 cm / 4"
786-2198



MATHIEU TC

786-2205
(14cm)

786-2206
(17cm)

786-2207
(20cm)



MATHIEU TC STANDARD

786-2208
14 cm / 5 1/2"

786-2209
17 cm / 6 1/2"

786-2210
20 cm / 8"



RYDER-LICHTENBERG TC

786-2211
(14cm)

786-2212
(17cm)

786-2213
(20cm)

Also available in German Forging



Olsen-Hegar TC

786-2199
14 cm / 5 1/2"

786-2201
16 cm / 6 1/4"

786-2200
17 cm / 6 1/2"

786-2202
19 cm / 7 1/2"



786-2203
12.5 cm / 5"



786-2204
15.5 cm / 6"



MATHIEU - GRAZIL TC

786-2214
(17cm)



LANGENBACK, KRAFTIG TC
786-2215
(20cm)



MATHIEU TC

786-2216
(17cm)

786-2217
(20cm)

786-2218
(23cm)



HANDLES REFERENCE GUIDE

